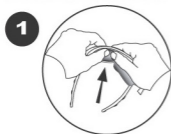
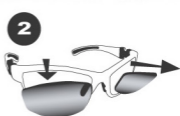


## To REMOVE the lenses:



Hold the frame in both hands with the lenses facing out. Press firmly on the top of each lens to "pop" it out of the frame.

## CHANGING THE LENSES



## To REPLACE the lenses:

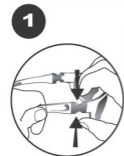


Place the wider edge of each lens in the groove of the frame, closest to the nose piece.



Firmly push the narrow end into the frame groove. Run fingers around the edge of the lens frame to ensure proper fit.

## To remove temples or strap



Using two fingers, press the tabs inward on the piece that is being removed.

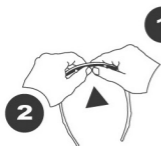


Pull the piece out, away and slightly down from the frame.

Firmly, push the end piece into our patented QRS (Quick Release System). The end piece will "click" into place.



## Inserting or removing Foam Eye Pad



Press the insert into the holes above the nose piece. The insert will "click" into place.



Align the tabs on the foam insert with the holes in the frame.



Press the insert into the holes near the temples. The insert will "click" into place.

To remove foam insert reverse this process.