

HYPERPRO

STEERING DAMPER MOUNTING KIT

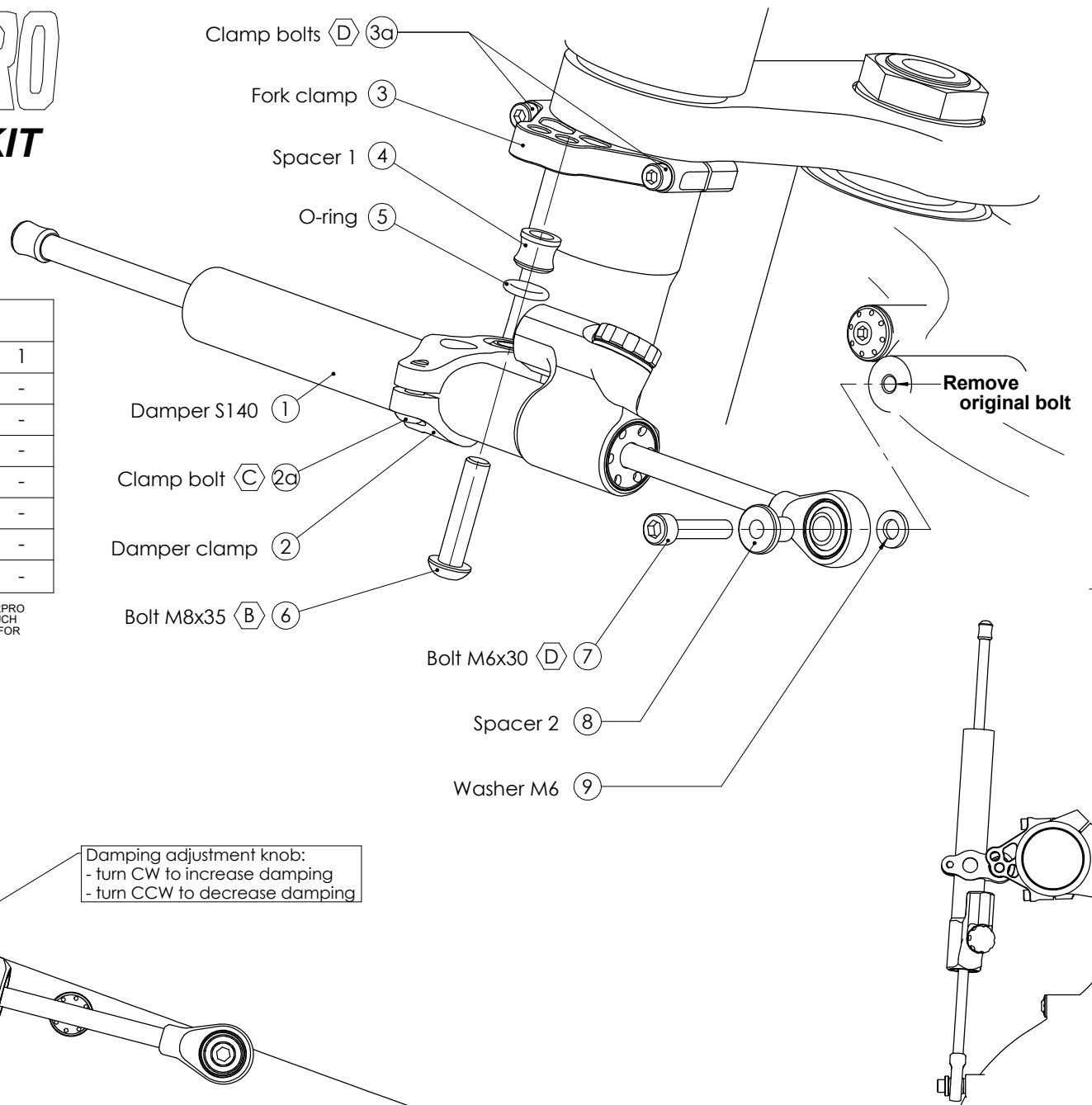
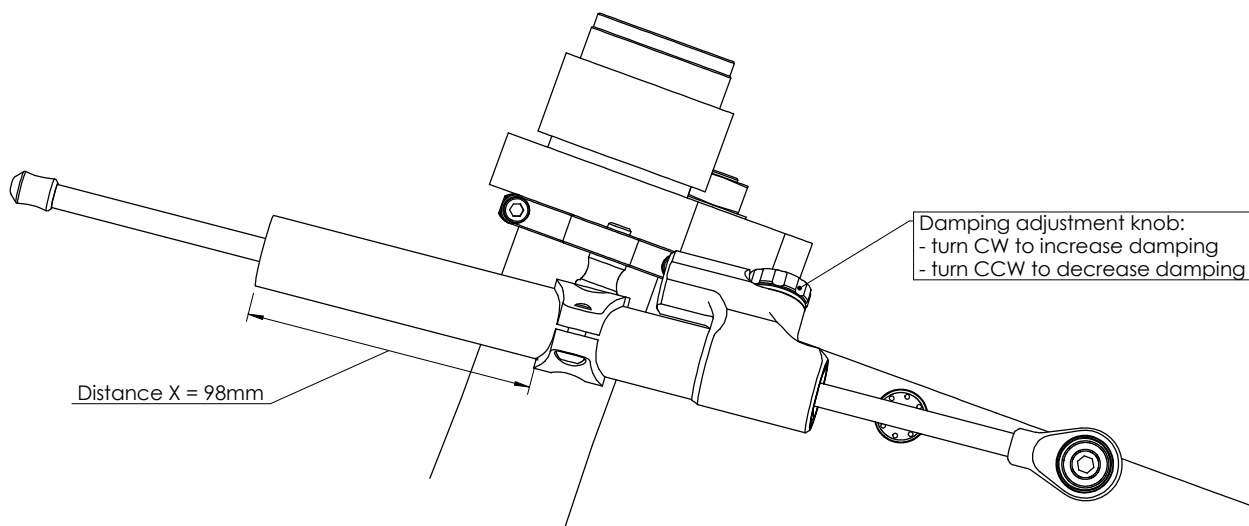
for

**Yamaha XSR 900 GP
Model 2024>**

MK-YA09-S001 PART LIST

SD stroke 140	1	Washer M6 ϕ 12	1
Damper Clamp [MP-DB018235]	1	-	-
Fork clamp ϕ 50 [MP-FC0500]	1	-	-
Spacer 1 [MP-SP0001]	1	-	-
Spacer 2 [MP-SP0004]	1	-	-
O-Ring	1	-	-
M6x30	1	-	-
M8x35 Button head	1	-	-

ALL IDEAS, DESIGNS ARRANGEMENTS AND PLANS INDICATED OR REPRESENTED BY THIS DRAWING ARE OWNED BY HYPERPRO AND WERE CREATED, EVOLVED AND DEVELOPED FOR USE ON AND IN CONNECTION WITH THE SPECIFIC PROJECT. NONE SUCH IDEAS, DESIGNS, ARRANGEMENTS OR PLANS SHALL BE USED BY OR DISCLOSED TO ANY PERSON, FIRM OR CORPORATION FOR ANY PURPOSE WHATSOEVER WITHOUT THE WRITTEN PERMISSION OF HYPERPRO.



* TORQUES

A: 5-9Nm / 44-80Lbs.In / 4.0-6.4Lbs.Ft
B: 14-17Nm / 124-150Lbs.In / 10.3-12.5Lbs.Ft
C: 6Nm / 53Lbs.In / 4.4Lbs.Ft

D: 8Nm / 70Lbs.In / 5.9Lbs.Ft
E: 55Nm / 486Lbs.In / 40Lbs.Ft
F: Factory torque (see owners manual)

HYPERPRO

STEERING DAMPER MOUNTING KIT

for

Yamaha XSR 900 GP Model 2024>

MK-YA09-S001 INSTALLATION INSTRUCTIONS

In general:

HYPERPRO can not be held responsible in any way for any form of physical, material, financial or other damage arising from use, assembly or overhaul of HYPERPRO products. HYPERPRO reserves the right to make changes without prior notice.

This product is ONLY TO BE INSTALLED BY A PROFESSIONAL MECHANIC.

This product is only to be used for the motorcycle brand, model and year stated specifically on top of the pages of this manual.

DO NOT attempt to install this product on motorcycles from any different brand, model and/or year than stated on the pages of this manual.

DO NOT use this kit for cars, boats, jet skis, snowmobiles, ATV's, aircraft, hovercrafts or any other vehicle and/or purpose.

HYPERPRO steering dampers are FOR RACE USE ONLY, NOT FOR HIGHWAY USE!

Before installation:

- Please read the entire manual carefully before starting the installation!
- Check if you have all the tools required. Good tools are a must.
- Protect your bike at the most important places in and around the work area (e.g. tank, fairing, frame, etc.), with a blanket, towel or similar.

During installation:

- Check all operations and parts carefully before, during and after performing each step.
- Clean all surfaces that are required for fitting parts together or for applying self adhesives or loctite, thoroughly with contactcleaner or another degreaser, unless otherwise stated.
- Be carefull not to damage or scratch any part of your bike.
- ALWAYS work relaxed and concentrated!! It is very easy to damage something or make a mistake.

After installation:

- Check and make sure that there is no contact between any part of the steering damper kit and any part of the motorcycle. The kit should not hit anything. Steering movement should not be limited by the steering damper. If the steering movement is limited, adjust the position of the tube in the clamp untill steering movment is normal again. Do not forget to tighten the clamp bolt again!
- ALWAYS check the steering movement and feeling before each ride !
- FIRST RIDES: Start with the damper turned fully open (turn adjuster knob fully counter clockwise). Start adjusting in between rides with steps of MAX. 2 CLICKS (0.25 TURN) EACH TIME, untill the damper is working satisfactory for your riding style.
- NEVER USE MAXIMUM SETTING, ALWAYS OPEN AT LEAST 2 CLICKS (0.25 TURN).
- WARNING ! DAMPER HAS AN ACTIVE / SPEEDSENSITIVE DAMPING SYSTEM;
 - Steering with NORMAL MOVEMENT should be FREE !!
 - Steering with FAST MOVEMENT should be CONTROLLED BY DAMPER !!
- HYPERPRO uses a special seal to reduce friction. The seal uses an oil film to work properly. It is normal that some oil can appear on the pistonrod.
- Damper works with oil: DAMPING CAN BE HARDER AT LOWER TEMPERATURES!

Step 1: install the damper clamp

Install the damper clamp using:

- Steering damper S140 (1)
- Damper clamp (2)

Shove the damper clamp (2) over the damper tube (1) in the correct orientation (see picture). Position the damper tube untill the distance "X" stated on page 1 is reached, make sure the damper-body is angled correctly, then tighten the clamp bolt (2a) with a torque of 6Nm/53Lbs.In/4.4Lbs.Ft.

Step 2: install the fork clamp

Install the fork clamp using:

- Fork clamp (3)

Disassemble the fork clamp. Re-assemble the parts around the left fork leg as shown on page 1, directly underneath the lower triple tree. Make sure its orientation is correct and tighten the clamp bolts (3a) with a torque of 8Nm/70Lbs.In/5.9Lbs.Ft

Step 3: install the steering damper

Install the steering damper using:

- Steering damper assembly form Step 1
- Spacer 1 (4)
- 1x O-ring (5)
- Bolt M8x35 (6)
- Bolt M6x30 (7)
- Spacer 2 (8)
- Washer M8 \varnothing 16 (9)

Mount the damper clamp (2) with damper (1) to the bottom of fork clamp (3). Make sure to use the hole closest to the fork leg (see picture). Use spacer (4), O-ring (5) and M8 bolt (6) and tighten with a torque of approx. 14-17Nm/124-150Lbs.In/10.3-12.5Lbs.Ft.

Remove the original bolt from the rear mounting point on the left side of the frame.

Install the damper ball-joint to the frame using bolt M6x30 (7), spacer 2 (8) and washer (9). Tighten the bolt (7) with a torque of 8Nm/70Lbs.In/5.9Lbs.Ft

Step 4: set fork clamp angle

Turn the handlebar completely to the left. Slightly loosen the fork clamp bolts (3a) and rotate the fork clamp so the damper reaches the end of the stroke at the maximum steering angle. Tighten the clamp bolts with a torque of 8Nm/70Lbs.In/5.9Lbs.Ft

Check if the damper does not touch anything when steering from left to right. Check if the bike can make it's full steering angle from left to right.

Re-adjust the angle and/or distance X if necessary. Don't forget to re-tighten the clamp bolts.