



EVOTECH®
P E R F O R M A N C E

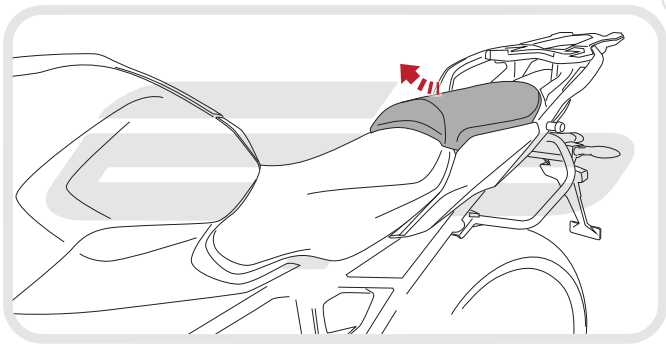
Installation Instructions

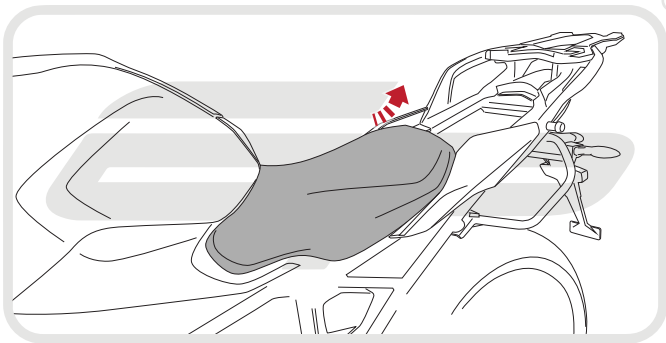
BMW R1200 RS TAIL TIDY

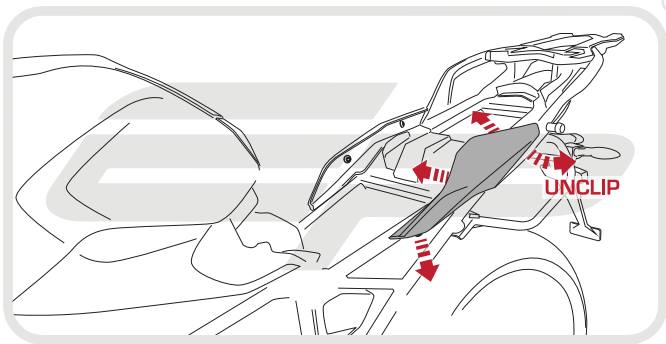
Product Reference - 13202

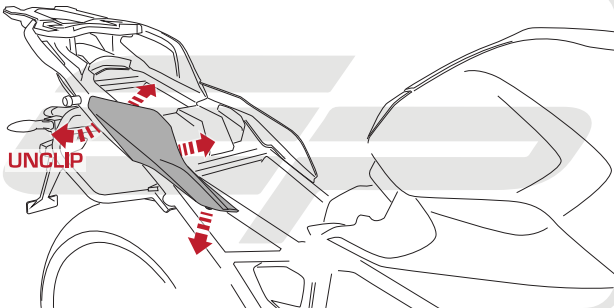
Kit Contents

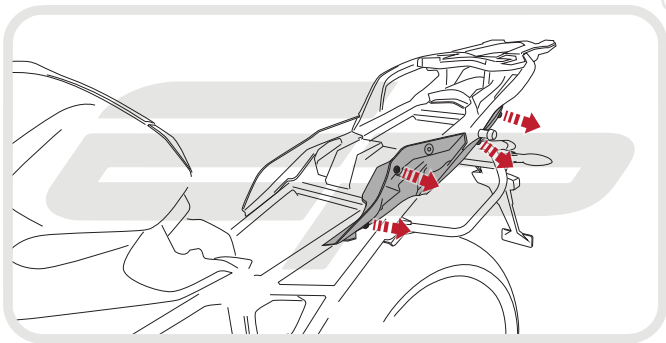
- | | |
|--|---|
| A 1 x Mounting Bracket | J 2 x Plastic Screws and Nuts |
| B 1 x Licence Plate Bracket A (Panier compatible) | K 2 x M6 - 20 Button Head Screws |
| C 1 x Licence Plate Bracket B (Non-Panier compatible) | L 2 x M6 Nyloc Nuts |
| D 1 x Light Bracket A (Panier compatible) | M 2 x M6 Washers |
| E 1 x Light Bracket B (Non-Panier compatible) | N 2 x M4 - 10 Button Head Screws |
| F 1 x LED Light Unit | O 2 x M3 - 12 Button Head Screws |
| G 1 x Plastic Undertray | P 3 x M5 - 12 Button Head Screws |
| H 1 x Reflector and Bracket | Q 5 x Cable Ties |
| I 2 x M6 Top Hat Washers | |

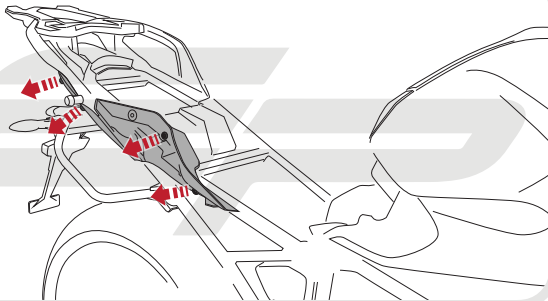


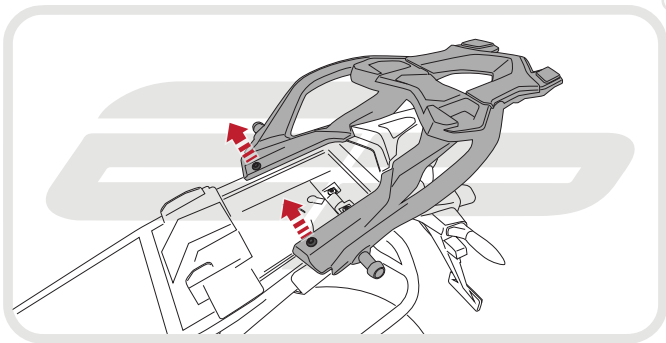


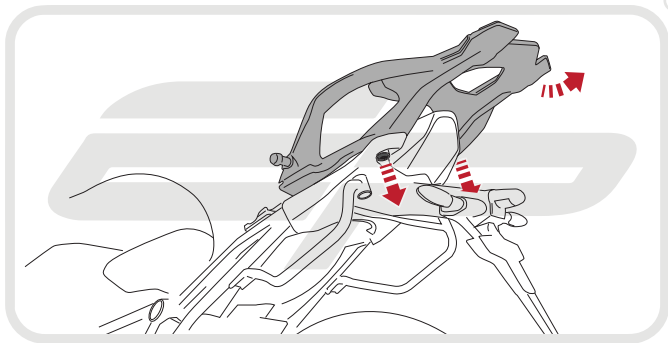






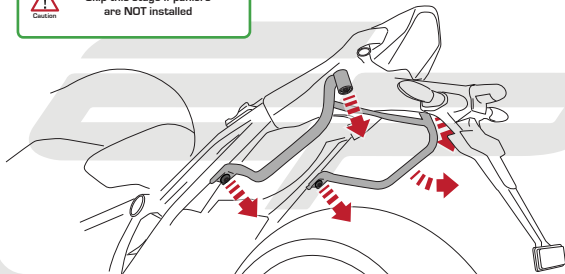


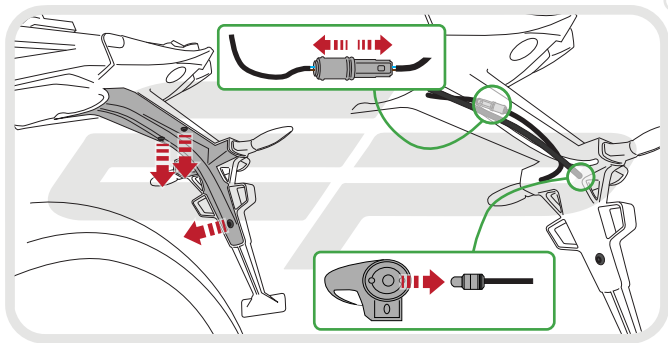


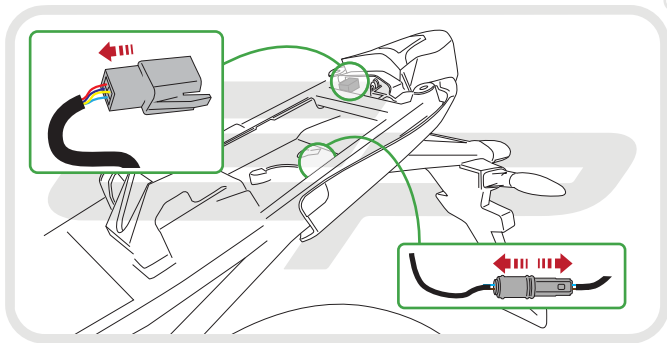


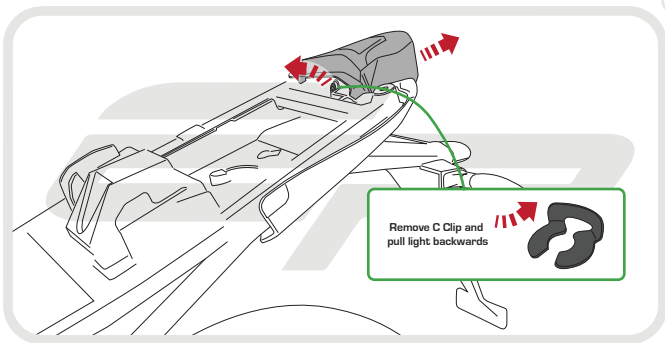


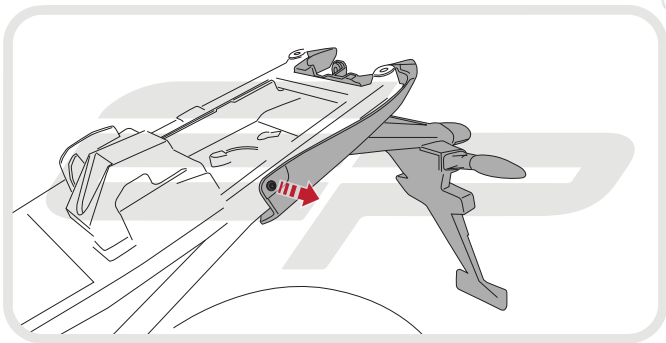
Skip this stage if paniers
are NOT installed

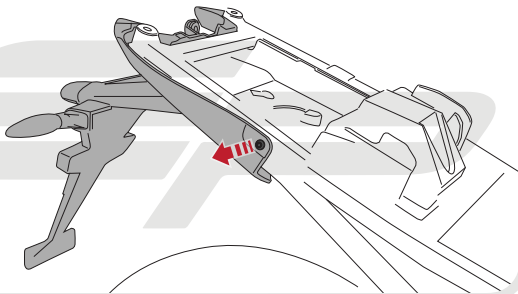


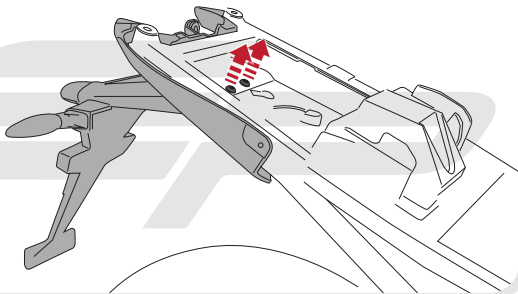




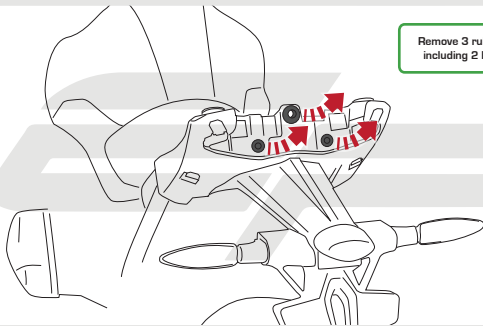


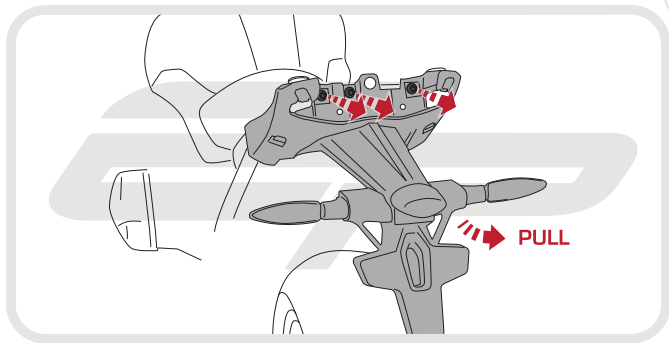


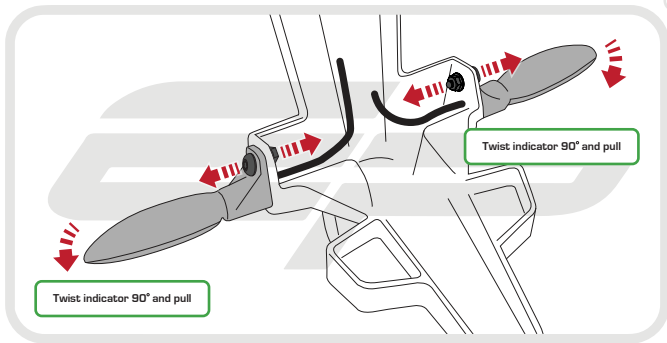


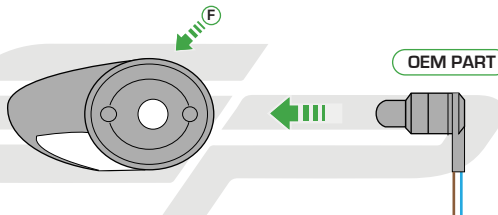


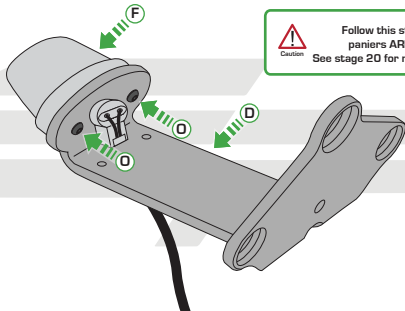
Remove 3 rubber grommets
including 2 brass washers











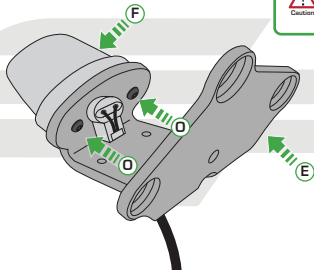
Caution

Follow this step **ONLY** if
paniers **ARE** installed.
See stage 20 for non-panier version



Caution

Follow this step **ONLY** if
paniers **ARE NOT** installed

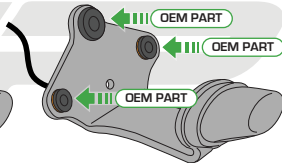
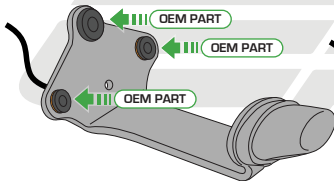




Push rubber grommets through in direction shown



Follow this step for both panier and non-panier versions





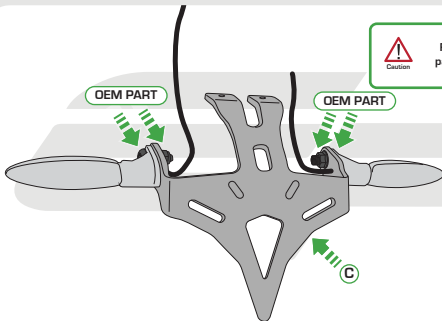
Caution

Follow this step **ONLY** if
paniers **ARE** installed.
See stage 23 for non-panier version

OEM PART

OEM PART

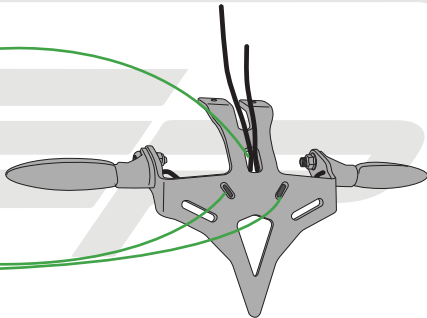
B

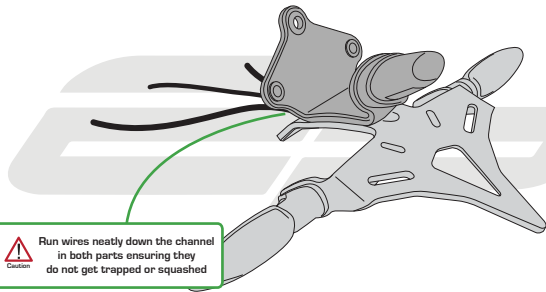


Feed wires through
slot in tail tidy



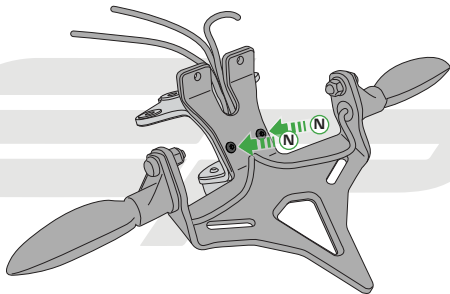
Feed cable tie through tail tidy
so the head sits inside the
slot on the outer face



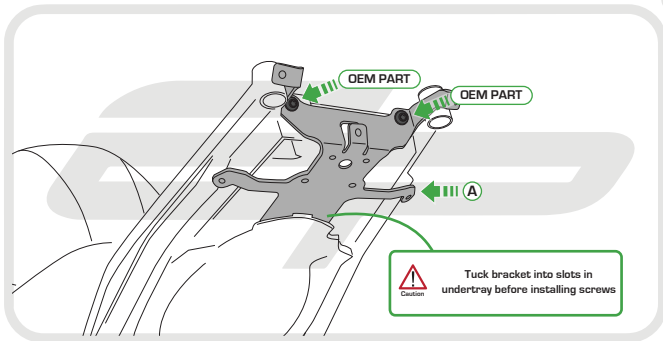


Caution

Run wires neatly down the channel
in both parts ensuring they
do not get trapped or squashed

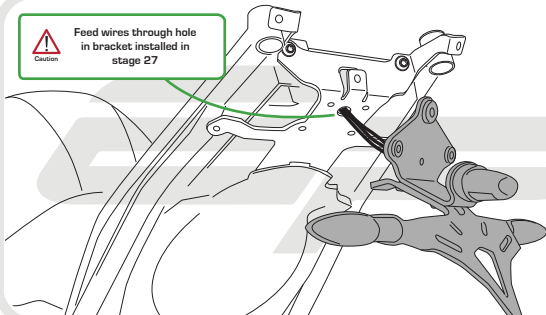


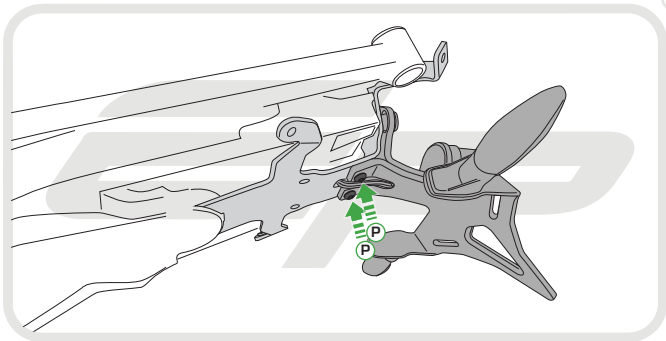
EVOTECH[®]
P E R F O R M A N C E

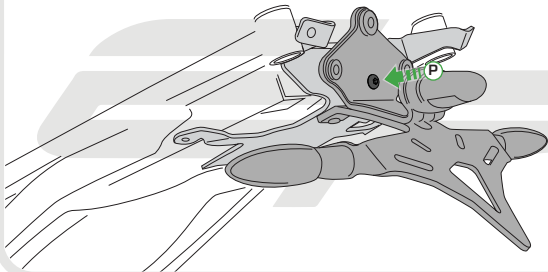




Feed wires through hole
in bracket installed in
stage 27



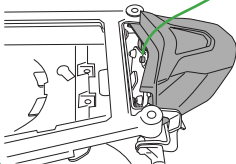


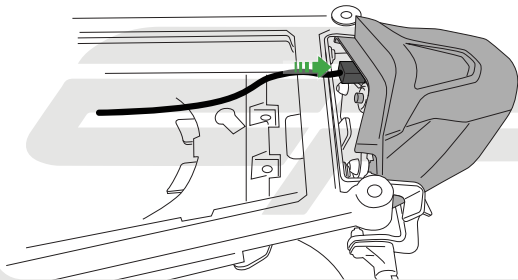




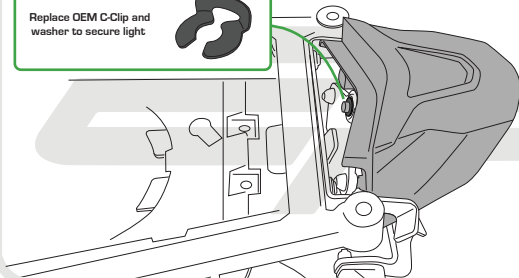
OEM PART

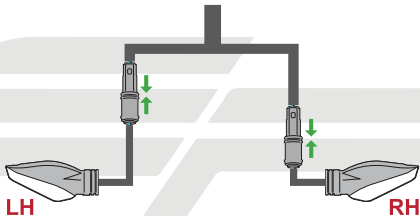
Ensure all three pins push firmly
into rubber grommets.
Top pin should be visible.





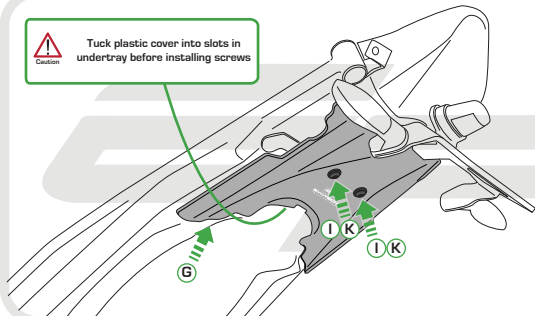
Replace OEM C-Clip and washer to secure light

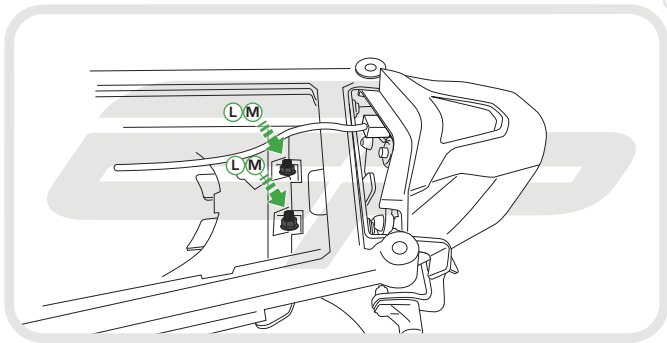






Tuck plastic cover into slots in undertray before installing screws



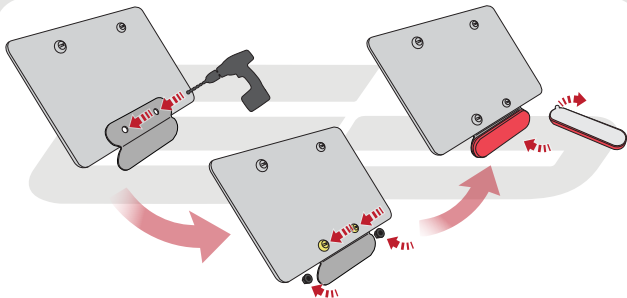




Reverse Stages

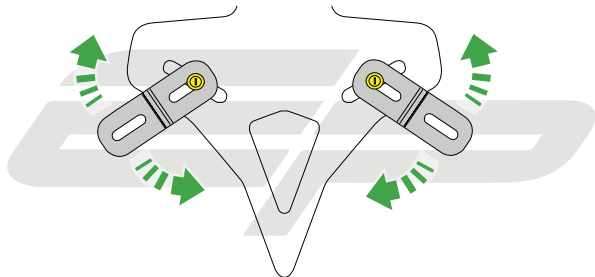
9 - 1

Reflector Bracket Installation



EVOTECH[®]
P E R F O R M A N C E

Number Plate Adaptor Installation Instructions



EVOTECH[®]
P E R F O R M A N C E



ESSENTIAL CHECKS



After installation of your tail tidy ensure that the licence plate does not contact the rear tyre when suspension is fully compressed.

Ensure all electrics including indicators, tail light, brake light and licence plate light lights are working correctly before riding the motorcycle.

It is recommended that periodic inspections are made to ensure that all fixings are fully tightend.



EVOTECH®
P E R F O R M A N C E

www.evotech-performance.com